

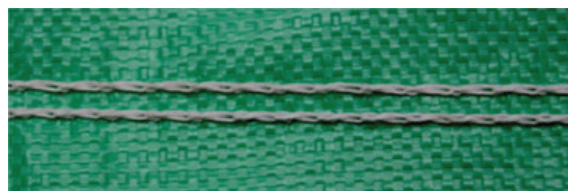
## Twin needle sewing heads reduce waste of small food granules

The food industry relies heavily on adequate packaging to ensure that goods maintain the highest level of quality and integrity from the point of leaving the factory to being purchased by the consumer. Defective packaging not only appears dissatisfying, but it can also be a sign of a product not being fresh or safe to eat. Manufacturers of granule products, such as flour, sugar and wheat, often encounter additional challenges when deciding on packaging. The slightest opening in a bag might enable tampering of the granules, cause spoilage or result in the small pieces pouring out of the bag.

A small sugar mill plant located in Mexico was packaging 50 kg bags of sugar in woven poly bags. The owner was receiving an increasing number of complaints due to the contents spilling when the bags were stacked and transported. After reaching out to a Fischbein International distributor, it became evident that the plant could benefit from the recently developed twin needle sewing head. The owner purchased two machines and immediately implemented the new bag sealing technique.



The Fischbein twin needle sewing head places a lower and upper row of stitches approximately  $\frac{1}{4}$  inch apart from one another. The dual stitch closure is exactly what the sugar mill plant needed in order to eliminate loss of sugar when bags are transported from the mill to its customers. In addition, the owner of the plant received extra satisfaction knowing that a person would have to go through not one but two lines of sewing in order to tamper with the product. Customers were pleased to receive their bags of sugar perfectly sealed with the contents intact.



**Twin Needle Stitch**

Furthermore, shortly after implementing the Fischbein twin needle systems, the sugar mill plant noticed significant improvements in their revenue. With the plant's previous bag closing system, it was not uncommon for sugar granules to pour out of the bag while an employee attempted to securely fasten the bag. In addition, the bags that lost contents while being transported were typically returned to the plant and the customer received a refund. The loose sugar and returned bags were written off as losses for the plant. The Fischbein twin needle systems enabled the sugar mill plant to address these issues and therefore reduce the amount of wasted product.

Visit booth N-5314 at Pack Expo 2016 to learn more about the global portfolio of products from Fischbein International.

[www.fischbein.com](http://www.fischbein.com)

